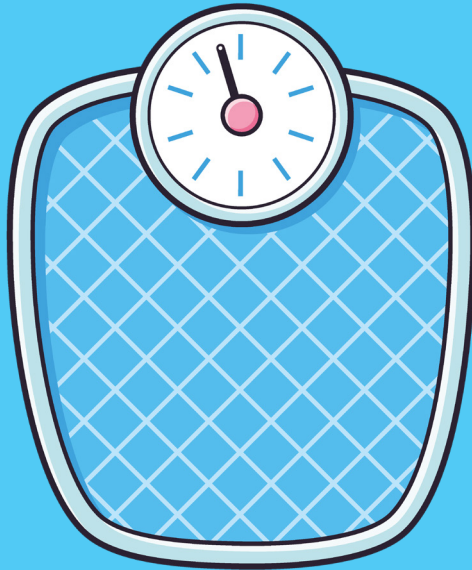


WATCH YOUR WEIGHT



Did you know a high BMI significantly increases your risk of poor eye health and sight loss?

For more information visit
visionmatters.org.uk



**NATIONAL EYE
HEALTH WEEK**
MONDAY 23 – SUNDAY 29 SEPTEMBER 2024
VISION MATTERS

WEIGHT & YOUR EYE HEALTH

Watch your weight to help protect your vision and eye health.

Obesity is a risk factor for all four major causes of sight loss in the UK – glaucoma macular degeneration, cataracts and diabetic retinopathy.

People with a BMI of 25 and above are 1.5 times more likely to suffer macular degeneration – the UK’s leading cause of sight loss – and obesity appears to increase the rate of progression of the condition even further.

For those with a BMI over 30 their risk of macular degeneration is double that of a person who is not overweight.

People who are genetically predisposed to macular degeneration (those with a family history of the condition) must be particularly careful about their weight as their risk of the condition can rise by almost 300% if they are obese.

Early obesity is also associated with diabetes, which is linked to diabetic retinopathy – a disease of the retina that can ultimately lead to total sight loss.

Ninety per cent of people diagnosed with diabetes in the UK have type 2 diabetes.

Research shows that 60 per cent of people with type 2 diabetes will develop some form of diabetic retinopathy.

People who are overweight are also at greater risk of developing cataracts.

Damage to blood vessels in the eye caused by excess body weight has also been linked to glaucoma.

The good news is that losing weight will reduce your risk of these eye disease.

Protect your peepers by keeping your waist to no bigger than 37 inches if you’re a man and 31.5inches if you’re a woman.